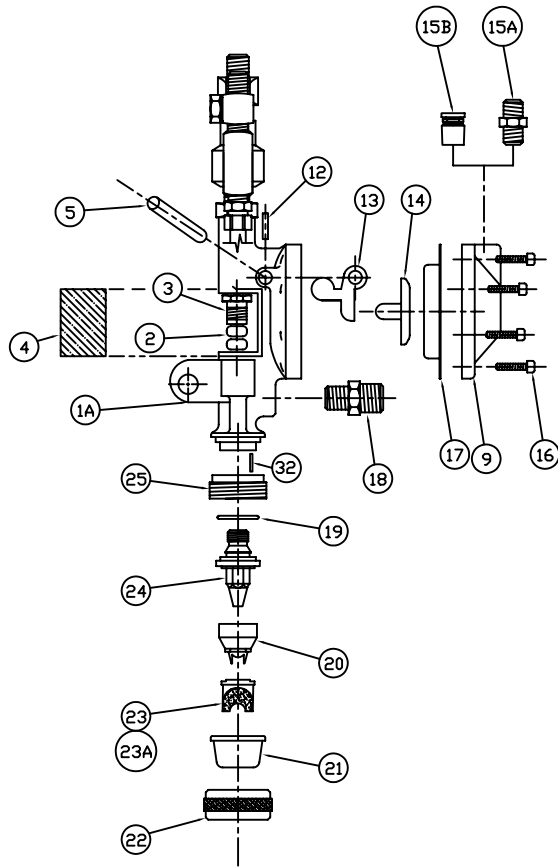
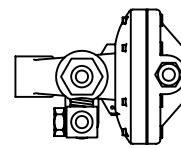


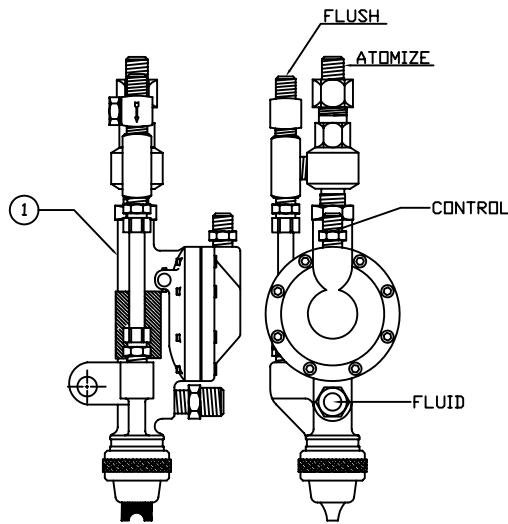
EXPLODED ASSEMBLY VIEW (FRONT)



EXPLODED ASSEMBLY VIEW (SIDE)



TOP VIEW



SIDE VIEW

FRONT VIEW

ITEM	QTY	PART NO	DESCRIPTION
1	1	KC-593-NBSSF	STRIPING GUN COMPLETE, BLEEDER TYPE
1A	1	KC-119	FRAME
2	1	KC-110	NEEDLE PACKING (SET OF 2)
3	1	KC-109	PACKING NUT
4	1	KC-111	PACKING GLAND COVER
5	1	KC-113	TRIGGER PIN
6	1	KC-106	NEEDLE, KC-593 STAINLESS STEEL
7	1	KC-104	SPRING GUIDE
8	1	KC-102	LOCKING NUT
9	1	KC-117	DIAPHRAGM COVER
10	1	KC-103	SPRING, NEEDLE
11	1	KC-105	NEEDLE ADJUSTMENT STOP
12	1	KC-114	SPRING COTTER PIN
13	1	KC-112	TRIGGER
14	1	KC-115	DIAPHRAGM PLATE & PIN
15A	2	H-2008	NIPPLE, BRASS, 1/4 X 1/4 NPT
15B	2	KQH07-35S	PUSH LOCK FITTING, 1/4T X 1/4P
16	8	KC-118	DIAPHRAGM SCREWS
17	1	KC-116	DIAPHRAGM
18	1	F-03750695-SS	ADAPTER, FLUID INLET, 1/4 X 3/8 NPT
19	1	AV-1	GASKET, FLUID TIP
20	1	WV-172-4M	AIR CAP ADAPTER
21	1	WV-173	AIR CAP RETAINING HOOD
22	1	AV-11	RETAINING NUT, KNURLED
23	1	S-26	AIR CAP (HARDENED)3-6" LINE
23A	1	S-24	AIR CAP (HARDENED)6-9" LINE
24	1	WV-1115-SS	FLUID TIP, 11/64" STAINLESS STEEL
25	1	WV-94	ADAPTER, FLUID TIP
26	1	120-64	ADAPTER, BRASS, 3/8F X 1/4M
27	1	KC-140-1	NON BLEEDER (VALVE ONLY)
28	1	131-4	TEE 1/4F X 1/4M 1/4F
29	2	1268-6	TUBE FITTING, 1/4P X 3/8T ST
30	1	4212-540N2	ATOMIZE TUBE
31	1	KC-140-10	CHECK VALVE, 304 SS
32	1	MB-47	LOCATING PIN

NOTE:  
 1. (\*) INCLUDED IN  
 NEEDLE REPAIR KIT PART  
 NUMBER KC-143  
 2. (\*\*\*) INCLUDED IN TIP  
 REPAIR KIT PART NUMBER  
 KC-145

TOLERANCES UNLESS OTHERWISE SPECIFIED:  
 Angular ±2°  
 Fractional ±1/16"  
 .X= ±1  
 .XX=±.01  
 .XXX=±.005  
 .XXXX=±.0015

CONFIDENTIAL  
 THIS DOCUMENT, INCLUDING ALL INFORMATION HEREIN, IS THE EXCLUSIVE AND CONFIDENTIAL PROPERTY OF ERNEST INDUSTRIES. THEREFORE THIS DOCUMENT IS NOT TO BE COPIED, REPRODUCED, OR DELIVERED TO OTHERS WITHOUT THE EXPRESS WRITTEN PERMISSION OF ERNEST INDUSTRIES.

Kelly-Creswell  
 1221 Groop Rd.  
 Springfield, OH 45504  
 937-325-3978  
**KC** Since 1937

DRAWN BY  
 CDW  
 APPROVED BY

DATE  
 5-25-10  
 DATE APPROVED

TITLE:  
**KC-593-NBSSF STRIPING GUN**  
 DESCRIPTION:  
**NON BLEEDER FLUSH GUN**  
 DWG NO./PART NO.  
**KC-593 NBSSF REV A**  
 SCALE: N/A  
 SIZE: A  
 PAGE #: 1-2  
 REV: A

NEEDLE REPAIR KIT PART  
NUMBER KC-143



KC-110  
NEEDLE PACKING (SET OF 2)  
QTY-1



KC-106-SS  
NEEDLE, KC-593 STAINLESS STEEL  
QTY-1



KC-103  
SPRING, NEEDLE  
QTY-1



KC-116  
DIAPHRAGM  
QTY-1



AV-1  
GASKET FLUID TIP  
QTY-1

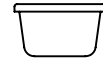


WV-1115-SS  
ADAPTER, FLUID TIP  
QTY-1

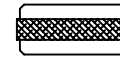
TIP REPAIR KIT PART  
NUMBER KC-145



WV-172-4M  
AIR CAP ADAPTER  
QTY-1



WV-173  
AIR CAP RETAINING HOOD  
QTY-1



AV-11  
RETAINING NUT, KNURLED  
QTY-1



S-26  
AIR CAP, (HARDENED) 3-6" LINE  
QTY-1

TOLERANCES UNLESS OTHERWISE SPECIFIED:  
Angular  $\pm 2^\circ$   
Fractional  $\pm 1/16"$   
.X =  $\pm 1$   
.XX =  $\pm 0.1$   
.XXX =  $\pm 0.005$   
.XXXX =  $\pm 0.0015$

CONFIDENTIAL  
THIS DOCUMENT, INCLUDING ALL INFORMATION HEREIN, IS THE EXCLUSIVE AND CONFIDENTIAL PROPERTY OF ERNEST INDUSTRIES. THEREFORE THIS DOCUMENT IS NOT TO BE COPIED, REPRODUCED, OR DELIVERED TO OTHERS WITHOUT THE EXPRESS WRITTEN PERMISSION OF ERNEST INDUSTRIES.

Kelly-Creswell  
1221 Groop Rd.  
Springfield, OH 45504  
937-325-3978



DRAWN BY  
CDW  
APPROVED BY

DATE  
7-14-10  
DATE APPROVED

TITLE: KC-593-NBSS			
DESCRIPTION: KC-143/KC-145 REBUILD KITS			
DWG NO./PART NO. KC-593-NBSS			
SCALE: N/A	SIZE: A	PAGE #: 2-2	REV: A